

05-39

SR

05379

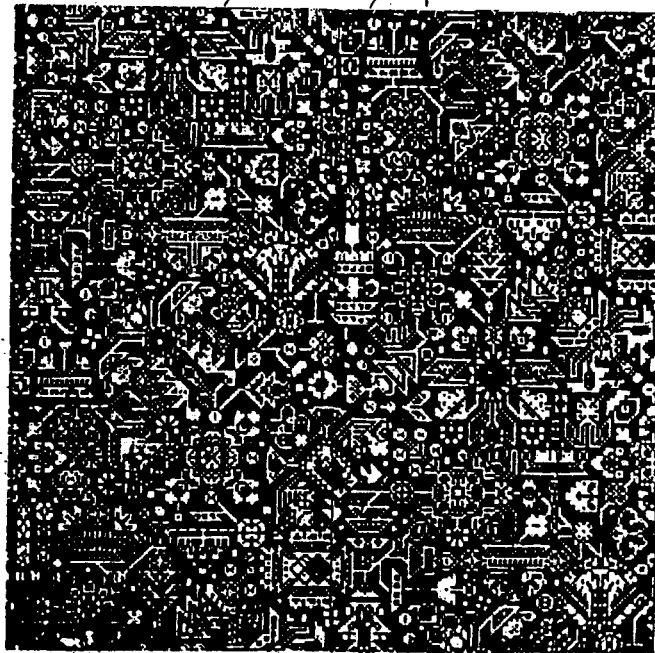
OR D 11,074

DESIGN.

W. L. JACOBS.
Carpet.

No. 11,074.

Patented Mar. 18, 1879.



Witnesses:

John C. Tunbridge
Willy S. Schultze

Inventor:

W. L. Jacobs
by his attorney
A. J. Driessen

UNITED STATES PATENT OFFICE.

WINTHROP L. JACOBS, OF JERSEY CITY, NEW JERSEY, ASSIGNOR TO
HARTFORD CARPET COMPANY, OF HARTFORD, CONNECTICUT.

DESIGN FOR A CARPET.

Specification forming part of Design No. **11,074**, dated March 18, 1879; application filed
February 12, 1879. Term of patent 3½ years.

To all whom it may concern:

Be it known that I, WINTHROP L. JACOBS, of Jersey City, in the county of Hudson and State of New Jersey, have originated and designed a Pattern for Carpets and other Fabrics, of which the following is a full, clear, and exact description, reference being had to the accompanying photographic illustration, making part of this specification.

This invention relates to a new and original design for carpets, oil-cloths, and similar fabrics.

It consists of the new arrangement and ornamentation of parts hereinafter more fully pointed out.

The accompanying photographic illustration represents a face view of my new design.

This design is composed of a series of figures, to be hereinafter more fully described, all arranged upon the background A, as shown in the photographic illustration. *a* is a T-shaped figure. It has a square placed in the angle of the T. A rhomboid is placed upon each of its horizontal arms. The stem is divided by a vertical division into two wings, between which a small rosette is placed. In each of the two corners formed by the stem and the top bar is a crown-shaped figure, *b*, with triangular base.

d is a rosette with ornamental center piece. From it project three trefoils, *e e e*, and a branched stem, *f*. The branches, as well as the stem *f*, have a flower at the terminus. Between two of the trefoils *e e* is a V-shaped figure, *g*, having the appearance of a thumb-nut placed on a stem, that traverses the rosette *d* and a smaller rosette beyond, as shown.

h i is a four-winged cross with a central rosette, and with projecting spear-heads between its wings.

j is an inverted-T-shaped figure with a rosette at the upper end of its stem, and *k* is a crown-shaped figure with flat base and richly-ornamented top. *l* is a five-sided figure with two right angles and two oblique sides.

A large-T-shaped figure, *m*, is placed near the rosette *d*. This figure *m* is embellished at each end of its cross-piece by a rosette, and also by an ornamental top piece. At each of

the two corners, between the stem and horizontal bar, is a right-angled sector.

n is a fan-shaped figure with an oval central ornamentation and two parallel stripes at its bottom.

The figures *k, h, l, m, n*, and *g* are all grouped along an irregular stem, *o*, having several branches, and connecting also to a floral ornament, *p*.

q is a prominent approximately T-shaped figure. The stem of this figure has a zigzag outline, giving the appearance somewhat of series of trapezoids. This figure has a large rosette at the junction of its stem to the cross-bar. From each of the two ends of this bar projects a bell-shaped ornament. A fan-shaped ornament surmounts the figure *q* at the center, entering a V-shaped recess formed in top of the cross-bar.

Between the figures *n* and *q* is a small rectangular figure, *r*, with ornamental top piece.

s is a rosette with three leaf-like projections.

t is a triangular figure with scalloped base. Upon the apex of this figure rests an L-shaped ornament, as shown.

u is a small V-shaped figure, richly ornamented and placed beneath the rosette *s*.

v w are two series of overlapping triangles, forming two converging rows.

x is a Maltese cross. Three of its sides are ornamented by a scalloped border. From the fourth side projects a stem, to which are connected, first, a series of superposed triangles, *y*; secondly, a figure looking somewhat like an ornamented coffee-mill, 1; and, thirdly, a roof-shaped figure, 2.

3 is a group of figures, which together form a triangular outline. This group is composed of a central rectangle, sidewardly-projecting triangular wings, a crown-shaped top, and two small triangular ornaments at the sides of the crown.

4 is a spider-like figure, having six legs, head, and tail.

5 is another group of superposed triangles, and 6 is an ornamental bar, with leaves projecting from its lower side and joining to the L-shaped top of the ornament *t*.

7 is a rosette placed between the ornament *w* and an H-shaped figure, 8.

The figures constituting the above-described design are connected by bars and smaller ornaments to constitute one harmonious group.

I claim—

1. The design for a carpet, consisting of a divided stem, a horizontal bar, two rhomboids, a square, and a rosette, all arranged to constitute the T-shaped figure *a*, substantially as shown.

2. The design for a carpet, consisting of the T-shaped figure *a* and the crown-shaped figures *b*, substantially as shown.

3. The design for a carpet, consisting of a rosette, *d*, trefoils *e*, and branched stem *f*, all arranged to form a group, substantially as shown.

4. The design for a carpet, consisting of the figures *d*, *e*, and *f*, and of the figures *g*, substantially as shown.

5. The design for a carpet, consisting of a four-winged cross, central rosette, and spear-heads, all grouped to constitute the figures *h* *i*, substantially as shown.

6. The design for a carpet, consisting of an inverted-T-shaped figure, *j*, a rosette, and a flat-based crown-shaped figure, *k*, substantially as shown.

7. The design for a carpet, consisting of a stem, cross-bar, top rosettes, ornamental top piece, and right-angled sectors to constitute the T-shaped figure *m*, with the sectors in the angles, substantially as shown.

8. The design for a carpet, consisting of a fan-shaped figure, *n*, an oval central ornamentation, and two parallel stripes, substantially as shown.

9. The design for a carpet, consisting of the figures *k*, *h*, *l*, *m*, *n*, *g*, and *o*, substantially as shown.

10. The design for a carpet, consisting of a

series of trapezoids, a rosette, and two bell-shaped figures to constitute the figure *q*, substantially as shown.

11. The design for a carpet, consisting of the figure *q* and a fan-shaped figure, the latter figure entering a V-shaped recess that is formed in the top bar of the figure *q*, substantially as shown.

12. The design for a carpet, consisting of the rectangular figure *r* and ornamented top piece, substantially as shown.

13. The design for a carpet, consisting of the triangular figure *t* and of an L-shaped ornament on the apex of the figure *t*, substantially as shown.

14. The design for a carpet, consisting of the Maltese cross *x*, a scalloped border, the ornament *l*, and a roof-shaped figure, *2*, all connected to form a group, substantially as shown.

15. The design for a carpet, consisting of a central rectangle, triangular wings, a crown-shaped top, and two small triangles to form the group *3*, having triangular outline, substantially as shown.

16. The design for a carpet, consisting of the spider-like ornament *4*, having legs, head, and tail, substantially as shown.

17. The design for a carpet, consisting of an ornamental bar, *6*, and leaves, all connected to form a group, substantially as shown.

18. The design for a carpet, consisting of the ornamental figures *7* and *8*, substantially as shown.

19. The design for a carpet, consisting of the figures *a*, *b*, *d*, *e*, *f*, *g*, *h*, *i*, *j*, *k*, *l*, *m*, *n*, *o*, *p*, *q*, *r*, *s*, *t*, *u*, *v*, *w*, *x*, *y*, *1*, *2*, *3*, *4*, *5*, *6*, *7*, and *8*, substantially as shown.

WINTHROP L. JACOBS.

Witnesses:

WILLIAM FOWLER,
FERREIER J. MARTIN.